

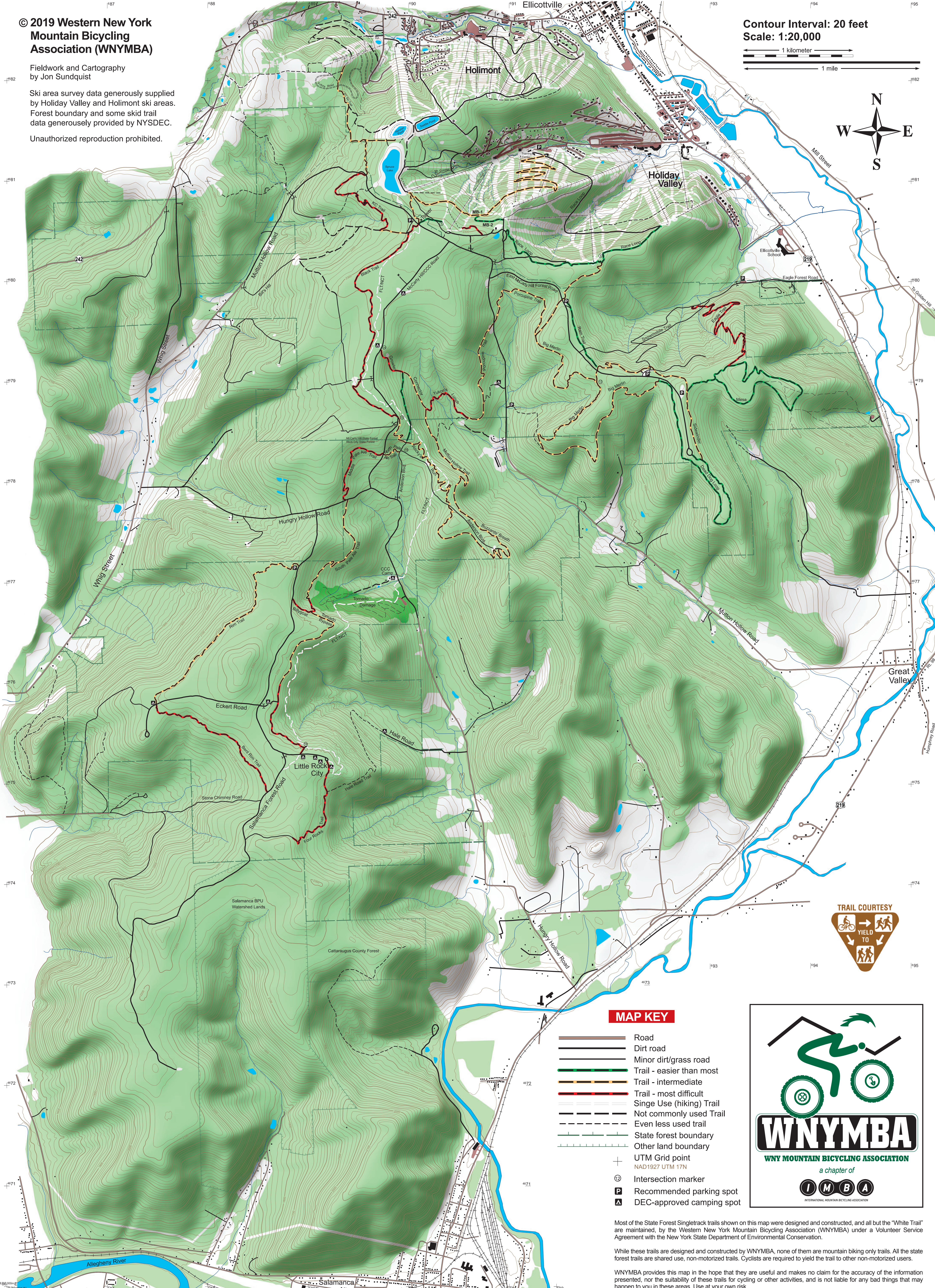
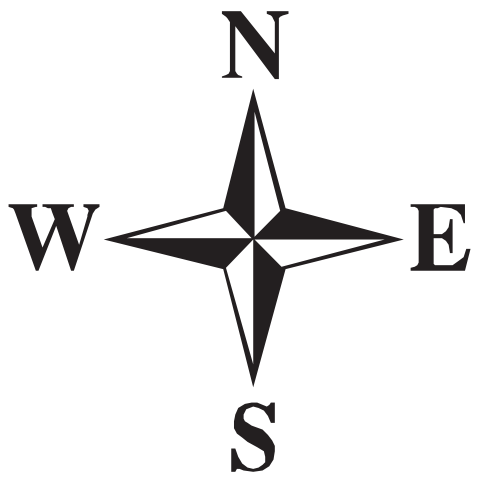
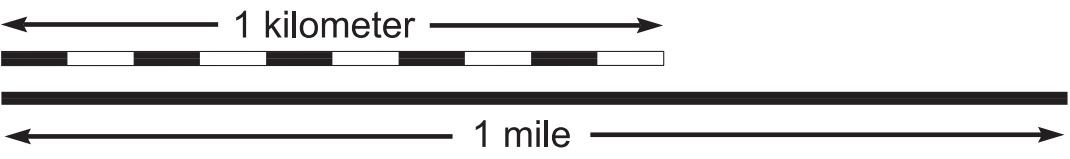
© 2019 Western New York Mountain Bicycling Association (WNYMBA)

Fieldwork and Cartography  
by Jon Sundquist

Ski area survey data generously supplied  
by Holiday Valley and Holimont ski areas.  
Forest boundary and some skid trail  
data generously provided by NYSDEC.

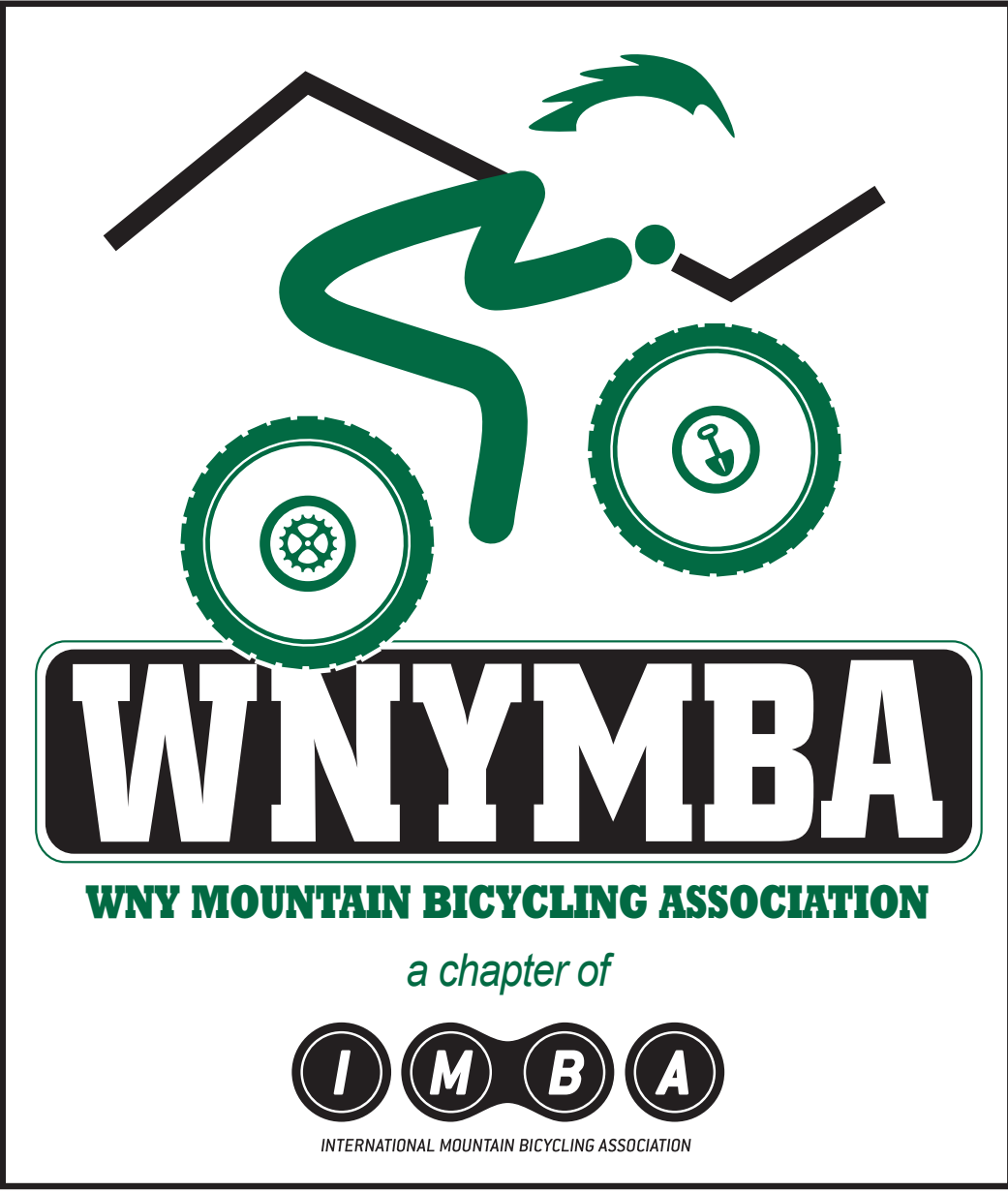
Unauthorized reproduction prohibited.

Contour Interval: 20 feet  
Scale: 1:20,000



MAP KEY

- Road
- Dirt road
- Minor dirt/grass road
- Trail - easier than most
- Trail - intermediate
- Trail - most difficult
- Singe Use (hiking) Trail
- Not commonly used Trail
- Even less used trail
- State forest boundary
- Other land boundary
- UTM Grid point
- Intersection marker
- Recommended parking spot
- DEC-approved camping spot



Most of the State Forest Singletrack trails shown on this map were designed and constructed, and all but the "White Trail" are maintained, by the Western New York Mountain Bicycling Association (WNYMBA) under a Volunteer Service Agreement with the New York State Department of Environmental Conservation.

While these trails are designed and constructed by WNYMBA, none of them are mountain biking only trails. All the state forest trails are shared use, non-motorized trails. Cyclists are required to yield the trail to other non-motorized users.

WNYMBA provides this map in the hope that they are useful and makes no claim for the accuracy of the information presented, nor the suitability of these trails for cycling or other activities, and is not liable for any bad things that may happen to you in these areas. Use at your own risk.